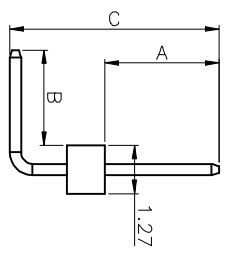
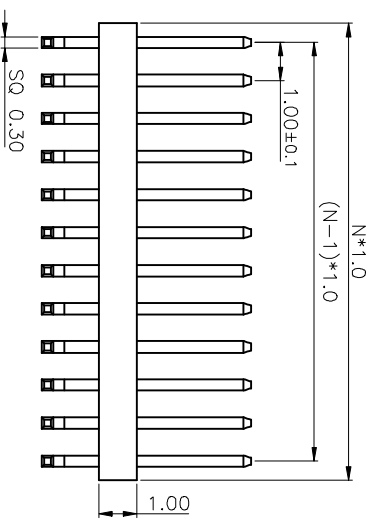


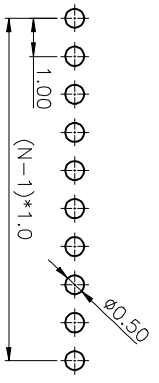
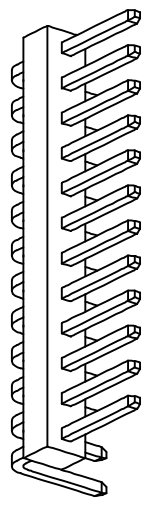
REV.	DESCRIPTION	DRAWN	CHECKED	APPROVED
A	NEW RELEASE	ZQJ 11/18/2014	~	ZQJ 11/18/2014
B	ADD P/N QMS	CJJ 11/18/2014	~	

NOTES:

1. MATERIAL
  - 1.1 INSULATOR:THERMOPLASTIC(UL 94V-0).
  - 1.2 CONTACT MATERIAL: COPPER ALLOY.
2. SPECIFICATION
  - 2.1 CURRENT RATING:1.0 Amp.
  - 2.2 INSULATION RESISTANCE:500MΩ Min.
  - 2.3 DIELECTRIC WITHSTANDING:600VAC.
  - 2.4 CONTACT RESISTANCE:20mΩ Max.
  - 2.5 OPERATING TEMPERATURE:-40°C To+105°C.



TYPE	DIM A	DIM B	DIM C
1	3.00	2.50	5.50
2			
3			
4			
5			
6			
7			
8			
9			
10			



RECOMMEND PCB LAYOUT(TOLERANCE=±0.05)

GENERAL TOLERANCE		ANGLE TOLERANCE	
X, .X, .XX	±0.60 ±0.38 ±0.25	X, .X, .XX	±5° ±3° ±2°
DRAWING TYPE	CUSTOMER	SCALE	1:1
DRAWING NO.		SHEET	1 OF 1

UNITS	PROJECTION	TITLE
mm	⊕	SINGLE ROW PIN HEADER
A4	⊕	PITCH 1.00mm R/A TYPE
SHEET SIZE	A4	SERIES LLL1013-04C

慈溪蓝翎电子有限公司  
CIXI LANLING ELECTRONICS CO., LTD.

