

REV.	DESCRIPTION	DRAWN	CHECKED	APPROVED
A	NEW RELEASE	ZQJ 11/18/2014		
B	ADD P/N CODE	CJJ 11/18/2014		

TYPE 1

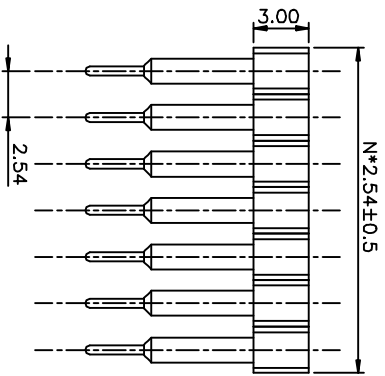
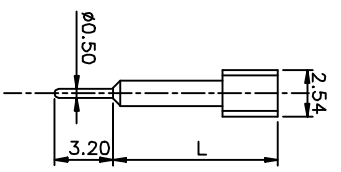
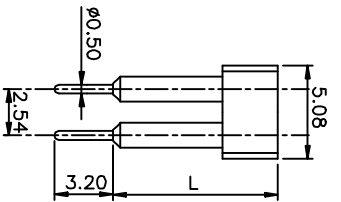
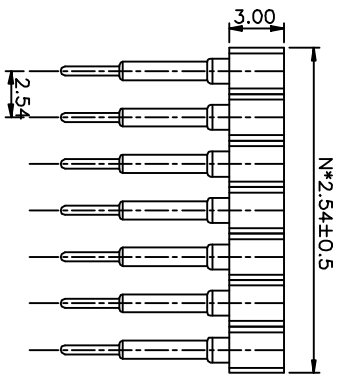
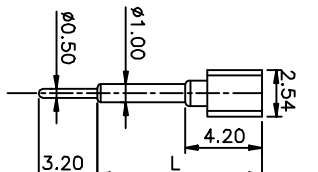
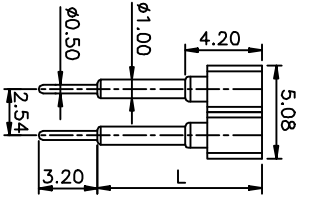


TABLE A
TYPE DIMENSION (L)

1	6.00
2	7.00
3	8.00
4	9.00
5	10.00
6	11.00
7	12.00
8	14.60
9	

TYPE 2

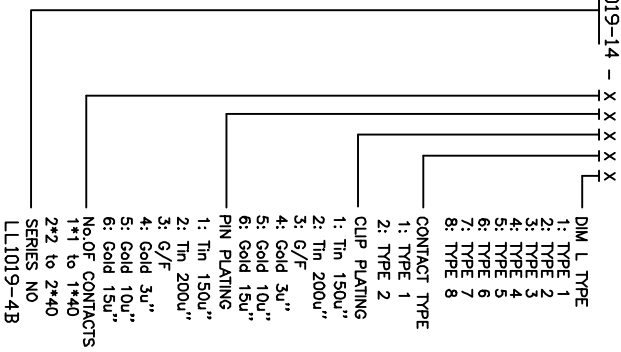


NOTES:

- ELECTRICAL:
 - Current rating: 3Amps/contact max.
 - Contact resistance: $\leq 20m\Omega / \text{contact}$
 - Insulation resistance: $\geq 1000M\Omega$ at V=100V.
 - Operating voltage: 60V AC/DC.

2. PRODUCT NUMBER CODE:

LL1019-14 - X X X X X X



DUAL ROWS

SINGLE ROW

GENERAL TOLERANCE ANGLE TOLERANCE

X.	±0.60	X.	±5°
.X	±0.38	.X	±3°
.XX	±0.25	.XX	±2°

DRAWING TYPE CUSTOMER

SCALE	1:1	SHEET	10F1
DRAWING NO.			

PROJECTION

UNITS	mm
SHEET SIZE	A4

TITLE

SIP IC SOCKET PITCH 2.54mm
MATING PIN $\phi 0.47$
LL1019-4B

慈溪蓝翎电子有限公司
CIXI LANLING ELECTRONICS CO., LTD.

1 2 3 4 5 6 7 8