

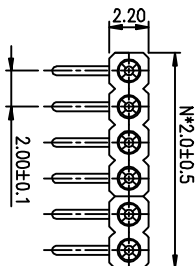
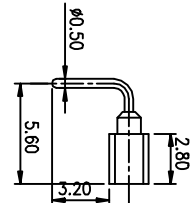
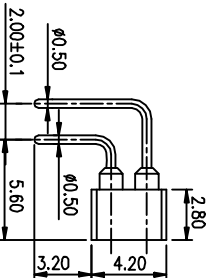
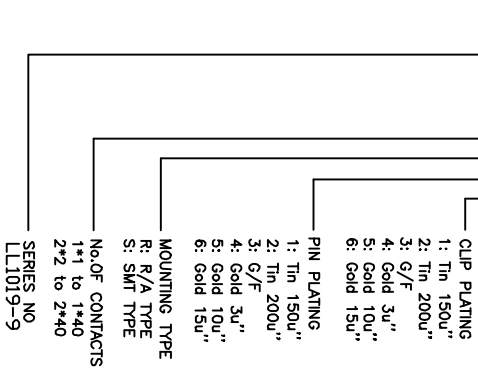
REV.	DESCRIPTION	DRAWN	CHECKED	APPROVED
A	NEW RELEASE	ZQJ 11/18/2014		
B	ADD P/N CODES	CJJ 11/18/2014		

NOTES:

- ELECTRICAL:
 - Current rating: 3Amps/contact max.
 - Contact resistance: $\leq 20m\Omega$ /contact.
 - Insulation resistance: $\geq 1000M\Omega$ at $V=100V$.
 - Operating voltage: 60V AC/DC.

2. PRODUCT NUMBER CODE:

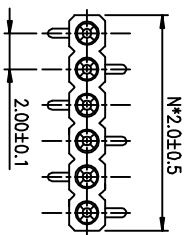
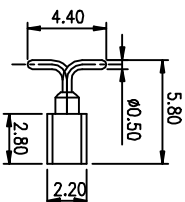
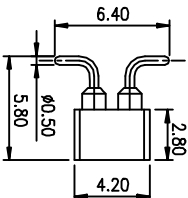
LL1019-9 - X X X X X



DUAL ROWS

SINGLE ROW

R/A TYPE



DUAL ROWS

SINGLE ROW

SMT TYPE

GENERAL TOLERANCE		ANGLE TOLERANCE		PROJECTION	
X	±0.60	X	±5°	UNITS	mm
X	±0.38	X	±3°	SHEET SIZE	A4
XX	±0.25	XX	±2°	TITLE	IC SOCKET R/A/SMT TYPE PITCH 2.00mm
DRAWING TYPE CUSTOMER		SCALE		SERIES	
DRAWING NO.		1:1		LL1019-9	
		SHEET		TITLE	
		10F1		IC SOCKET R/A/SMT TYPE PITCH 2.00mm	

慈溪蓝翎电子有限公司
CIXI LANLING ELECTRONICS CO., LTD.