

BOM LIST			
ITEM	PART NAME	Q'ty	NOTES
1	METAL HOOD	2	
2	LONG BOLT	2	
3	NUT	2	
4	SCREW-1	2	M3*1.2
5	WASHER	2	
6	SCREW-2	2	M3*6
7	SHORT BOLT	2	

REV.	DESCRIPTION	DRAWN	CHECKED	APPROVED
A	NEW RELEASE	ZQJ 11/18/2014	~	ZQJ 11/18/2014
B	ADD P/N CODE	CJ 11/18/2014		

NOTES:

1. PART NUMBER CODE:

LL1055-9A-09 X X X - X - X

LOGO Support
X: W/O LOGO

Shell Plating

N: Nickel

Z: Zinc

Bolt type

L: Long

S: Short

Packing type

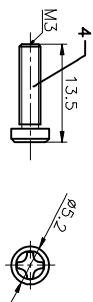
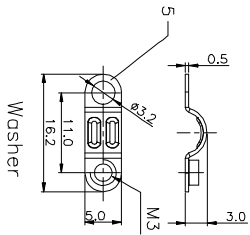
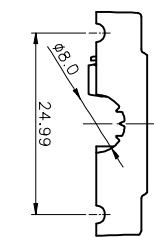
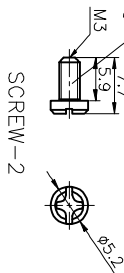
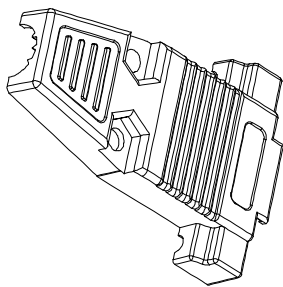
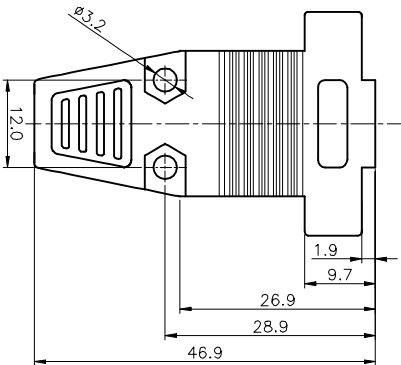
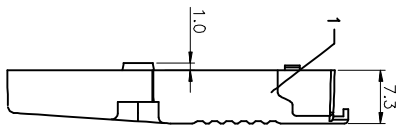
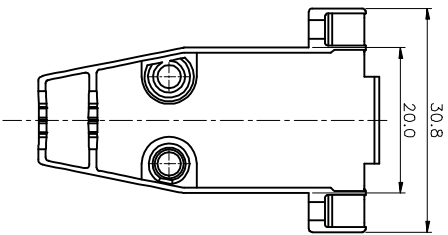
1: Mix packing

2: Separation packing

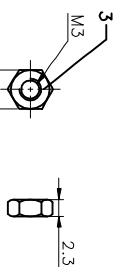
Cover Material
M: Metal(Zinc alloy)

Positions

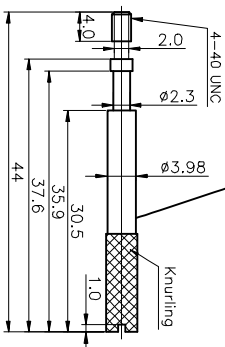
09: 9pin



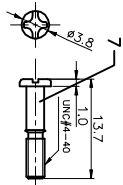
SCREW-1



NUT



Long BOLT



Short BOLT

GENERAL TOLERANCE	ANGLE TOLERANCE
X. ± 0.60	X. $\pm 5^\circ$
.X ± 0.38	.X $\pm 3^\circ$
.XX ± 0.25	.XX $\pm 2^\circ$

DRAWING TYPE	CUSTOMER
SCALE	1:1
DRAWING NO.	SHEET 1 OF 1

PROJECTION	TITLE
UNITS	D-SUB 9pin Metal Hood
SHEET SIZE	LL1055-3A
A4	SERIES

慈溪蓝翎电子有限公司
CIXI LANLING ELECTRONICS CO., LTD.
Tel: 86-574-63519035 Fax: 86-574-63517070