

REV	DESCRIPTION	DRAWN	CHECKED	APPROVED
A	NEW RELEASE	CJJ 11/18/2014		

NOTES:

- Color
Insulation: MULTI COLOUR

2. SPECIFICATION

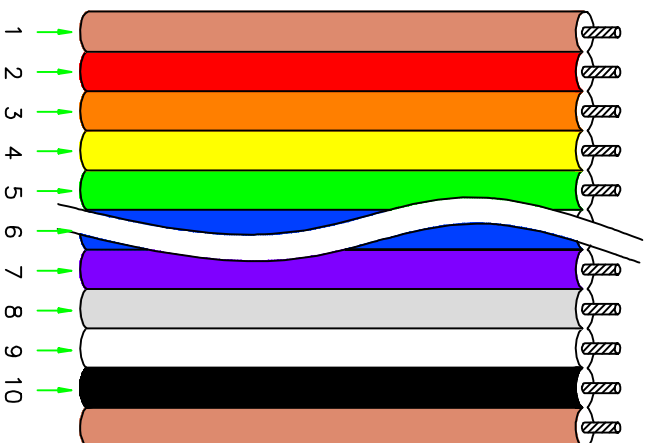
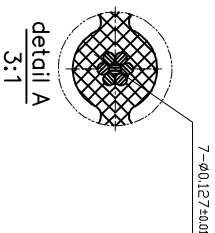
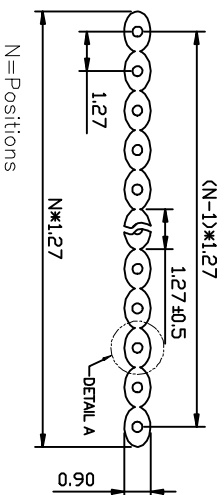
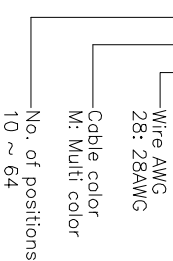
- . Rating: 300V / 1A
- . Conductor Size: 28AWG
- . Insulation resistance: 100MΩ/km min.
- . Dielectric withstanding voltage: 1000 VAC 1 minute.
- . Temperature range: -20°C to +80°C.

3. APPLICATION

- . Internal wiring of computers, electronic exchanges, measurement control devices, business machines, communication devices, and other electronic equipment.

4. Product Number Code

LL1050-1 -X X X X



Pin	Cable color	Pin	Cable color
1	Brown	6	Blue
2	Red	7	Purple
3	Orange	8	Gray
4	Yellow	9	White
5	Green	10	Black

GENERAL TOLERANCE	ANGLE TOLERANCE
X, ±0.60	X, ±5°
.X, ±0.38	X, ±3°
.XX, ±0.25	.XX, ±2°

DRAWING TYPE	CUSTOMER
SCALE	1:1
DRAWING NO.	SHEET 1 OF 1

PROJECTION	TITLE
UNITS: mm	FLAT CABLE MUTLI COLOR
SHEET SIZE: A4	SERIES: LL1050-1

慈溪蓝翎电子有限公司
CIXI LANLING ELECTRONICS CO., LTD.