

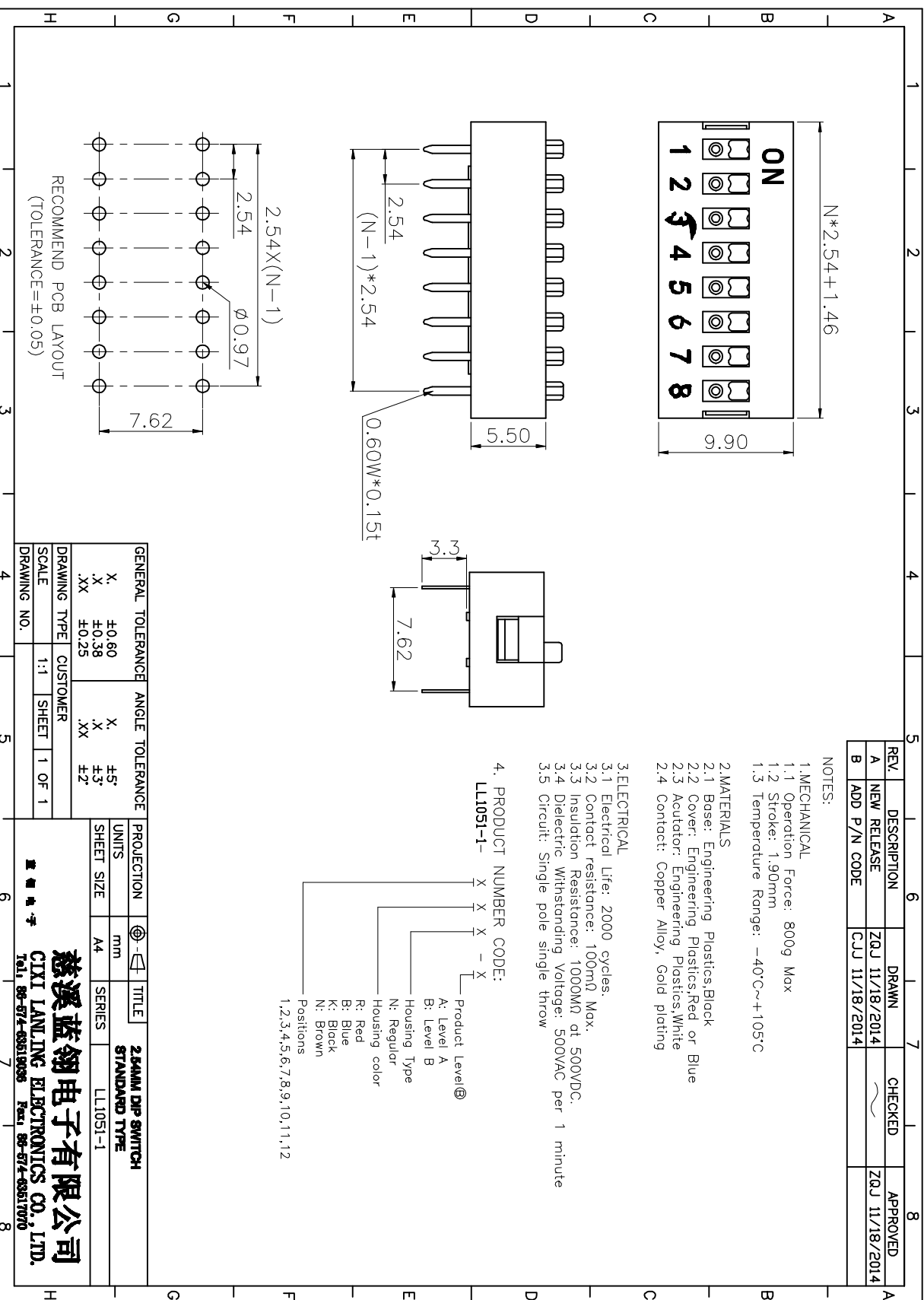
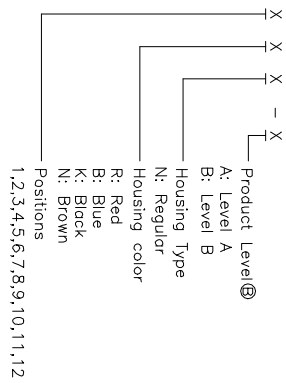
REV.	DESCRIPTION	DRAWN	CHECKED	APPROVED
A	NEW RELEASE	ZQJ 11/18/2014		ZQJ 11/18/2014
B	ADD P/N CODE	CJJ 11/18/2014		

NOTES:

- 1.MECHANICAL
 - 1.1 Operation Force: 800g Max
 - 1.2 Stroke: 1.90mm
 - 1.3 Temperature Range: -40C~+105C
- 2.MATERIALS
 - 2.1 Base: Engineering Plastics,Black
 - 2.2 Cover: Engineering Plastics,Red or Blue
 - 2.3 Acuator: Engineering Plastics,White
 - 2.4 Contact: Copper Alloy, Gold plating

- 3.ELECTRICAL
 - 3.1 Electrical Life: 2000 cycles
 - 3.2 Contact resistance: 100mΩ Max.
 - 3.3 Insulation Resistance: 1000MΩ at 500VDC.
 - 3.4 Dielectric Withstanding Voltage: 500VAC per 1 minute
 - 3.5 Circuit: Single pole single throw

4. PRODUCT NUMBER CODE:



GENERAL TOLERANCE	ANGLE TOLERANCE	PROJECTION	TITLE
X: ±0.60 X: ±0.38 .XX: ±0.25	X: ±5° X: ±3° .XX: ±2°	⊕	25MM DIP SWITCH STANDARD TYPE
DRAWING TYPE	CUSTOMER	SHEET SIZE	SERIES
SCALE	1:1	A4	LL1051-1
DRAWING NO.	SHEET	1 OF 1	

慈溪蓝翎电子有限公司
CIXI LANLING ELECTRONICS CO., LTD.
Tel: 86-574-63519035 Fax: 86-574-63517070